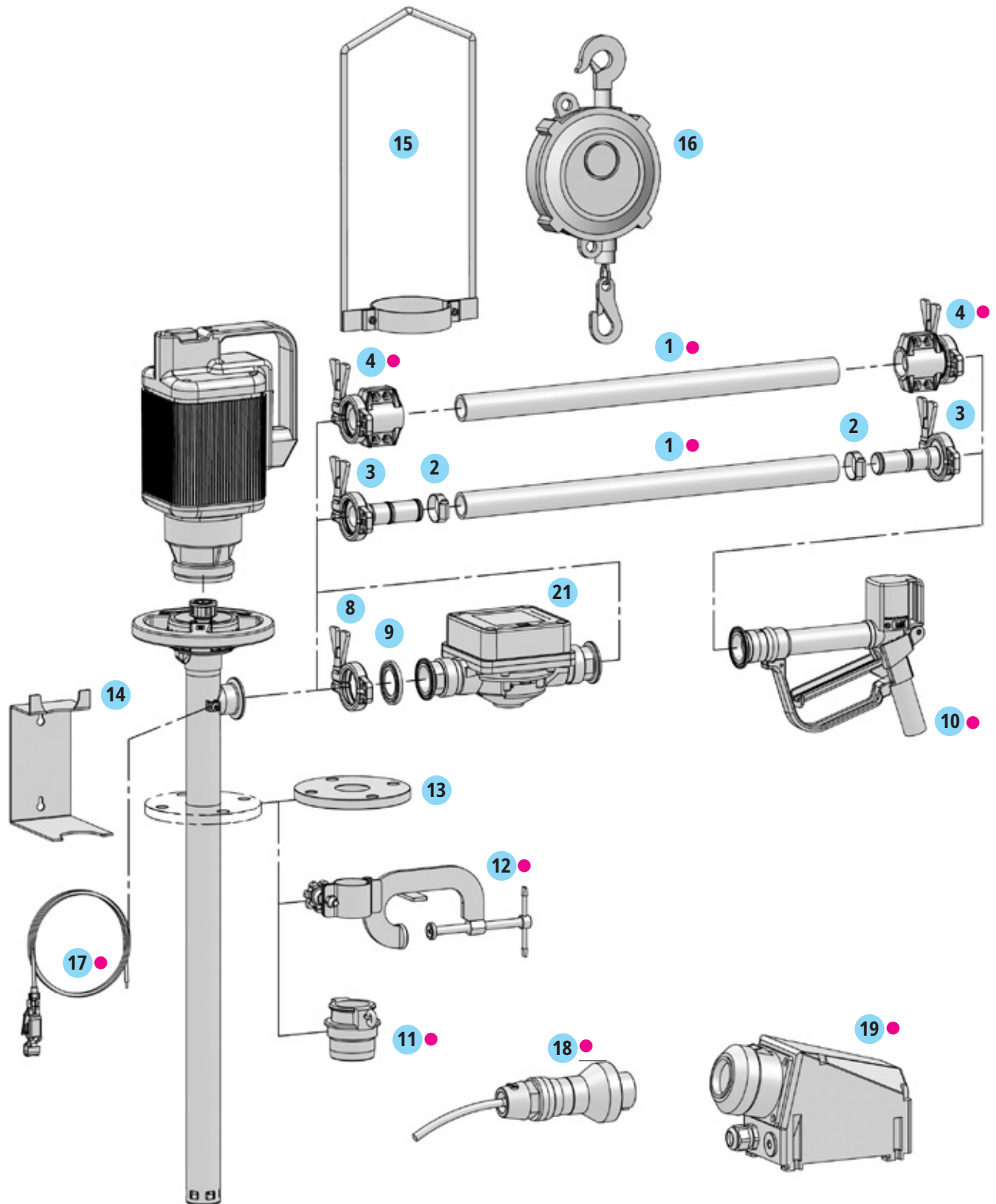


# Accessories

For PURE drum and container pumps



- 1 ● Hose
- 2 ● Hose clip
- 3 ● Hose connection
- 4 ● Hose connector
- 8 ● Tri-Clamp locking clamp
- 9 ● Tri-Clamp seal

- 10 ● Nozzle
- 11 ● Drum adapter
- 12 ● Clamping device
- 13 ● Installation flange
- 14 ● Wall bracket
- 15 ● Lifting device



- 16 ● Balancer
- 17 ● Equipotential bonding cable
- 18 ● Ex-plug
- 19 ● Ex-socket
- 21 ● Flow meter

● Suitable for transferring combustible and easy flammable liquids (e.g. ethanol, petrol) or in explosive hazard area.








# Accessories

For PURE drum and container pumps

Product detail	Specification	Order-No.																																																														
 <p><b>Caution:</b> The assembler is responsible for the professional bonding of the hose according to the current Pressure Equipment Directive.</p>	<p><b>3 Hose connection with Tri-Clamp</b> For connection of the hose onto the pump, nozzle or Tri-clamp armatures (consisting of hose connector, locking clamp and seal) Material: stainless steel (1.4404)</p> <table border="0"> <tr> <td>Connection:</td> <td>for hose with nominal diameter:</td> <td>Seal:</td> <td></td> </tr> <tr> <td>Tri-Clamp DN 32</td> <td>DN 19 (3/4")</td> <td>EPDM</td> <td><b>0204-870</b></td> </tr> <tr> <td>Tri-Clamp DN 32</td> <td>DN 19 (3/4")</td> <td>FPM</td> <td><b>0204-871</b></td> </tr> <tr> <td>Tri-Clamp DN 32</td> <td>DN 25 (1")</td> <td>EPDM</td> <td><b>0204-872</b></td> </tr> <tr> <td>Tri-Clamp DN 32</td> <td>DN 25 (1")</td> <td>FPM</td> <td><b>0204-873</b></td> </tr> <tr> <td>Tri-Clamp DN 32</td> <td>DN 32 (1 1/4")</td> <td>EPDM</td> <td><b>0204-874</b></td> </tr> <tr> <td>Tri-Clamp DN 32</td> <td>DN 32 (1 1/4")</td> <td>FPM</td> <td><b>0204-875</b></td> </tr> <tr> <td>Tri-Clamp DN 32</td> <td>DN 38 (1 1/2")</td> <td>EPDM</td> <td><b>0204-876</b></td> </tr> <tr> <td>Tri-Clamp DN 32</td> <td>DN 38 (1 1/2")</td> <td>FPM</td> <td><b>0204-877</b></td> </tr> </table> <p><b>For individual needs, e.g. for connection to on-site Tri-clamp armatures:</b> <b>Tri-clamp hose connector (1.4404):</b></p> <table border="0"> <tr> <td>DN 32 for hose DN 19</td> <td><b>0370-093</b></td> </tr> <tr> <td>DN 32 for hose DN 25</td> <td><b>0370-094</b></td> </tr> <tr> <td>DN 32 for hose DN 32</td> <td><b>0370-095</b></td> </tr> <tr> <td>DN 32 for hose DN 38</td> <td><b>0370-096</b></td> </tr> </table> <p><b>Tri-clamp locking clamp (1.4408):</b></p> <table border="0"> <tr> <td>DN 25/32/40</td> <td><b>0370-088</b></td> </tr> </table> <p><b>Tri-Clamp seals:</b></p> <table border="0"> <tr> <td>DN 32, EPDM</td> <td><b>0314-596</b></td> </tr> <tr> <td>DN 32, FPM</td> <td><b>0314-597</b></td> </tr> <tr> <td>DN 40, EPDM</td> <td><b>0314-598</b></td> </tr> <tr> <td>DN 40, FPM</td> <td><b>0314-599</b></td> </tr> </table> <p><b>3 Adapter fitting Tri-Clamp</b> DN 32 on tube fitting DIN 11851 Rd 58 x 1/6 (DIN 405)</p> <p style="text-align: right;"><b>0172-668</b></p>	Connection:	for hose with nominal diameter:	Seal:		Tri-Clamp DN 32	DN 19 (3/4")	EPDM	<b>0204-870</b>	Tri-Clamp DN 32	DN 19 (3/4")	FPM	<b>0204-871</b>	Tri-Clamp DN 32	DN 25 (1")	EPDM	<b>0204-872</b>	Tri-Clamp DN 32	DN 25 (1")	FPM	<b>0204-873</b>	Tri-Clamp DN 32	DN 32 (1 1/4")	EPDM	<b>0204-874</b>	Tri-Clamp DN 32	DN 32 (1 1/4")	FPM	<b>0204-875</b>	Tri-Clamp DN 32	DN 38 (1 1/2")	EPDM	<b>0204-876</b>	Tri-Clamp DN 32	DN 38 (1 1/2")	FPM	<b>0204-877</b>	DN 32 for hose DN 19	<b>0370-093</b>	DN 32 for hose DN 25	<b>0370-094</b>	DN 32 for hose DN 32	<b>0370-095</b>	DN 32 for hose DN 38	<b>0370-096</b>	DN 25/32/40	<b>0370-088</b>	DN 32, EPDM	<b>0314-596</b>	DN 32, FPM	<b>0314-597</b>	DN 40, EPDM	<b>0314-598</b>	DN 40, FPM	<b>0314-599</b>									
Connection:	for hose with nominal diameter:	Seal:																																																														
Tri-Clamp DN 32	DN 19 (3/4")	EPDM	<b>0204-870</b>																																																													
Tri-Clamp DN 32	DN 19 (3/4")	FPM	<b>0204-871</b>																																																													
Tri-Clamp DN 32	DN 25 (1")	EPDM	<b>0204-872</b>																																																													
Tri-Clamp DN 32	DN 25 (1")	FPM	<b>0204-873</b>																																																													
Tri-Clamp DN 32	DN 32 (1 1/4")	EPDM	<b>0204-874</b>																																																													
Tri-Clamp DN 32	DN 32 (1 1/4")	FPM	<b>0204-875</b>																																																													
Tri-Clamp DN 32	DN 38 (1 1/2")	EPDM	<b>0204-876</b>																																																													
Tri-Clamp DN 32	DN 38 (1 1/2")	FPM	<b>0204-877</b>																																																													
DN 32 for hose DN 19	<b>0370-093</b>																																																															
DN 32 for hose DN 25	<b>0370-094</b>																																																															
DN 32 for hose DN 32	<b>0370-095</b>																																																															
DN 32 for hose DN 38	<b>0370-096</b>																																																															
DN 25/32/40	<b>0370-088</b>																																																															
DN 32, EPDM	<b>0314-596</b>																																																															
DN 32, FPM	<b>0314-597</b>																																																															
DN 40, EPDM	<b>0314-598</b>																																																															
DN 40, FPM	<b>0314-599</b>																																																															
	<p><b>4 Hose connector with Tri-clamp</b> For connection of conductive hose onto the pump, nozzle or Tri-clamp armatures in explosive hazardous area. The hose connector ensures a highly conduction transition between conductive hose and pump/armature. The ohmic resistance between the armatures must be lower than 10<sup>6</sup> Ohm. (Consisting of hose connector, clamp collars, locking clamp and seal). Material: stainless steel (1.4404)</p> <table border="0"> <tr> <td>Connection:</td> <td>for hose with nominal diameter:</td> <td>Seal:</td> <td></td> </tr> <tr> <td>Tri-Clamp DN 32</td> <td>DN 19 (3/4")</td> <td>EPDM</td> <td><b>0204-860 ●</b></td> </tr> <tr> <td>Tri-Clamp DN 32</td> <td>DN 19 (3/4")</td> <td>FPM</td> <td><b>0204-861 ●</b></td> </tr> <tr> <td>Tri-Clamp DN 32</td> <td>DN 25 (1")</td> <td>EPDM</td> <td><b>0204-862 ●</b></td> </tr> <tr> <td>Tri-Clamp DN 32</td> <td>DN 25 (1")</td> <td>FPM</td> <td><b>0204-863 ●</b></td> </tr> <tr> <td>Tri-Clamp DN 32</td> <td>DN 32 (1 1/4")</td> <td>EPDM</td> <td><b>0204-864 ●</b></td> </tr> <tr> <td>Tri-Clamp DN 32</td> <td>DN 32 (1 1/4")</td> <td>FPM</td> <td><b>0204-865 ●</b></td> </tr> <tr> <td>Tri-Clamp DN 40**</td> <td>DN 38 (1 1/2")</td> <td>EPDM</td> <td><b>0204-866 ●</b></td> </tr> <tr> <td>Tri-Clamp DN 40**</td> <td>DN 38 (1 1/2")</td> <td>FPM</td> <td><b>0204-867 ●</b></td> </tr> </table> <p><b>For individual needs, e.g. for connection to on-site Tri-clamp armatures:</b> <b>Tri-clamp hose connector (1.4404):</b></p> <table border="0"> <tr> <td>DN 32 for hose DN 19</td> <td><b>0300-174</b></td> </tr> <tr> <td>DN 32 for hose DN 25</td> <td><b>0300-175</b></td> </tr> <tr> <td>DN 32 for hose DN 32</td> <td><b>0300-176</b></td> </tr> <tr> <td>DN 40 for hose DN 38</td> <td><b>0300-177</b></td> </tr> </table> <p><b>Clamp collar (1.4408):</b></p> <table border="0"> <tr> <td>DN 19</td> <td><b>0300-180</b></td> </tr> <tr> <td>DN 25</td> <td><b>0300-181</b></td> </tr> <tr> <td>DN 32</td> <td><b>0300-182</b></td> </tr> <tr> <td>DN 38</td> <td><b>0300-183</b></td> </tr> </table> <p><b>Tri-Clamp locking clamp (1.4408):</b></p> <table border="0"> <tr> <td>DN 25/32/40</td> <td><b>0370-088</b></td> </tr> </table> <p><b>Tri-Clamp Seals:</b></p> <table border="0"> <tr> <td>DN 32, EPDM</td> <td><b>0314-596</b></td> </tr> <tr> <td>DN 32, FPM</td> <td><b>0314-597</b></td> </tr> <tr> <td>DN 40, EPDM</td> <td><b>0314-598</b></td> </tr> <tr> <td>DN 40, FPM</td> <td><b>0314-599</b></td> </tr> </table>	Connection:	for hose with nominal diameter:	Seal:		Tri-Clamp DN 32	DN 19 (3/4")	EPDM	<b>0204-860 ●</b>	Tri-Clamp DN 32	DN 19 (3/4")	FPM	<b>0204-861 ●</b>	Tri-Clamp DN 32	DN 25 (1")	EPDM	<b>0204-862 ●</b>	Tri-Clamp DN 32	DN 25 (1")	FPM	<b>0204-863 ●</b>	Tri-Clamp DN 32	DN 32 (1 1/4")	EPDM	<b>0204-864 ●</b>	Tri-Clamp DN 32	DN 32 (1 1/4")	FPM	<b>0204-865 ●</b>	Tri-Clamp DN 40**	DN 38 (1 1/2")	EPDM	<b>0204-866 ●</b>	Tri-Clamp DN 40**	DN 38 (1 1/2")	FPM	<b>0204-867 ●</b>	DN 32 for hose DN 19	<b>0300-174</b>	DN 32 for hose DN 25	<b>0300-175</b>	DN 32 for hose DN 32	<b>0300-176</b>	DN 40 for hose DN 38	<b>0300-177</b>	DN 19	<b>0300-180</b>	DN 25	<b>0300-181</b>	DN 32	<b>0300-182</b>	DN 38	<b>0300-183</b>	DN 25/32/40	<b>0370-088</b>	DN 32, EPDM	<b>0314-596</b>	DN 32, FPM	<b>0314-597</b>	DN 40, EPDM	<b>0314-598</b>	DN 40, FPM	<b>0314-599</b>	
Connection:	for hose with nominal diameter:	Seal:																																																														
Tri-Clamp DN 32	DN 19 (3/4")	EPDM	<b>0204-860 ●</b>																																																													
Tri-Clamp DN 32	DN 19 (3/4")	FPM	<b>0204-861 ●</b>																																																													
Tri-Clamp DN 32	DN 25 (1")	EPDM	<b>0204-862 ●</b>																																																													
Tri-Clamp DN 32	DN 25 (1")	FPM	<b>0204-863 ●</b>																																																													
Tri-Clamp DN 32	DN 32 (1 1/4")	EPDM	<b>0204-864 ●</b>																																																													
Tri-Clamp DN 32	DN 32 (1 1/4")	FPM	<b>0204-865 ●</b>																																																													
Tri-Clamp DN 40**	DN 38 (1 1/2")	EPDM	<b>0204-866 ●</b>																																																													
Tri-Clamp DN 40**	DN 38 (1 1/2")	FPM	<b>0204-867 ●</b>																																																													
DN 32 for hose DN 19	<b>0300-174</b>																																																															
DN 32 for hose DN 25	<b>0300-175</b>																																																															
DN 32 for hose DN 32	<b>0300-176</b>																																																															
DN 40 for hose DN 38	<b>0300-177</b>																																																															
DN 19	<b>0300-180</b>																																																															
DN 25	<b>0300-181</b>																																																															
DN 32	<b>0300-182</b>																																																															
DN 38	<b>0300-183</b>																																																															
DN 25/32/40	<b>0370-088</b>																																																															
DN 32, EPDM	<b>0314-596</b>																																																															
DN 32, FPM	<b>0314-597</b>																																																															
DN 40, EPDM	<b>0314-598</b>																																																															
DN 40, FPM	<b>0314-599</b>																																																															

● Suitable for transferring combustible and easy flammable liquids (e.g. ethanol, petrol) or in explosive hazard area.

Specification	Order-No.	Product detail
<p><b>10 Nozzle SS</b> Ideally suitable for filling and transferring liquids – also for combustible and highly flammable liquids – in food and pharmaceutical industry. Stainless steel (1.4571) housing and valve tappet. With hoop guard and rotating joint.</p> <p>Operating pressure: up to 3 bar Viscosity: up to 760 mPas Flow rate: up to 50 l/min. (water) Temperature of medium: up to 80 °C Weight: approx. 1 kg Connection: Tri-Clamp DN 32 Seal: FPM or EPDM</p> <p>Basic price nozzle SS<sup>▲</sup> Additional price version: PURE FPM<sup>▲</sup> Additional price version: PURE EPDM<sup>▲</sup></p> <p><sup>▲</sup>Please choose Order-No. basic price nozzle + Order No. additional price version: PURE</p>	<p><b>0204-370 ●</b> <b>0204-820 ●</b> <b>0204-821 ●</b></p>	
<p><b>11 Drum adapter in PP</b> For fixing the pump in the drum opening. For pump tube Ø 41 mm Outer thread G 2</p>	<p><b>0208-007</b></p>	
<p><b>11 Drum adapter in PE (electrically conductive)</b> For fixing the pump in the drum opening. For pump tube Ø 41 mm Outer thread G 2 Outer thread BCS 56 x 4 Outer thread BCS 70 x 6</p>	<p><b>0208-055 ●</b> <b>0208-052 ●</b> <b>0208-054 ●</b></p>	
<p><b>12 Clamping device SS (1.4571)</b> To fasten the drum pumps in open-topped drums and containers. For pump tube Ø 41 mm</p>	<p><b>0205-040 ●</b></p>	
<p><b>13 Installation flange SS (1.4571)</b> For fixing the drum and container pump according to DIN 2573, DN 50, PN 6 to a companion flange. The flange is welded onto the pump tube. For pump tube Ø 41 mm</p>	<p><b>0151-622</b></p>	
<p><b>14 Wall bracket</b> For safe storage of the pump when not in use.</p>	<p><b>0204-308</b></p>	

# Accessories

## For PURE drum and container pumps

Product detail	Specification	Order-No.
	<p><b>15 Lifting device</b> To simplify the process of lifting the pump in and out of drums and containers.</p> <p>For pumps with motors MA II and ME II For pumps with motors B4/GT</p>	<p><b>0211-047</b> <b>0214-196</b></p>
	<p><b>16 Balancer</b> for drum pump, with infinitely adjustable load balancer for easy lifting and moving of the pump.</p> <p>Load bearing capacity: 10-14 kg Tackle: 2 m</p>	<p><b>0371-012</b></p>
	<p><b>17 Equipotential bonding cable</b> Serves to create electrically conductive connection between explosion proof pump and container as earthing and equipotential bonding function.</p> <p>2 m long with fastening clip</p>	<p><b>0204-994</b> ●</p>
	<p><b>18 Ex-plug</b> Ensures the safe mains connection of the pump in explosive hazardous areas. CEE round plug in accordance with EEx de IIC T6, splash proof in compliance with IP 65.</p> <p>3-pole (alternating current) system CEAG for motor ME II 3-pole (alternating current) system STAHL for motor ME II</p>	<p><b>0336-536</b> ● <b>0336-540</b> ●</p>
	<p><b>19 Ex-socket</b> Ensures the safe mains connection of the pump in explosive hazardous areas. CEE-socket in accordance with EEx de IIC T6, splash proof in compliance with IP 65.</p> <p>3-pole (alternating current) system CEAG for motor ME II 3-pole (alternating current) system STAHL for motor ME II</p>	<p><b>0336-531</b> ● <b>0336-542</b> ●</p>
	<p><b>21 Modular electronic flow meter system, TS series, type VA10 in PURE version</b> For measuring of liquid foodstuffs, pharmaceuticals and cosmetics. Wide application range: directly at the drum pump, decentralized or in-line operation possible. With touch screen display, multilingual menu and simple plain text operation. Also with volume preselection. (Suitable connecting parts see items 8 and 9) For more details see separate flow meter leaflet.</p>	
	<p><b>8 Tri-Clamp locking clamp (1.4408)</b> For fixing the flow meter VA10 PURE at the pump. (Suitable seal see item 9) DN 25/32/40</p>	<p><b>0370-088</b> ●</p>
	<p><b>9 Tri-Clamp seal</b> For fixing the flow meter VA10 PURE at the pump.</p> <p>DN 32, EPDM DN 32, FPM DN 40, EPDM DN 40, FPM</p>	<p><b>0314-596</b> <b>0314-597</b> <b>0314-598</b> <b>0314-599</b></p>

● Suitable for transferring combustible and easy flammable liquids (e.g. ethanol, petrol) or in explosive hazard area.